

\$150,000 - 1438 Lakeland Village, Sherwood Park

MLS® #E4433011

\$150,000

3 Bedroom, 2.00 Bathroom, 1,220 sqft

Land Lease Community on 0.00 Acres

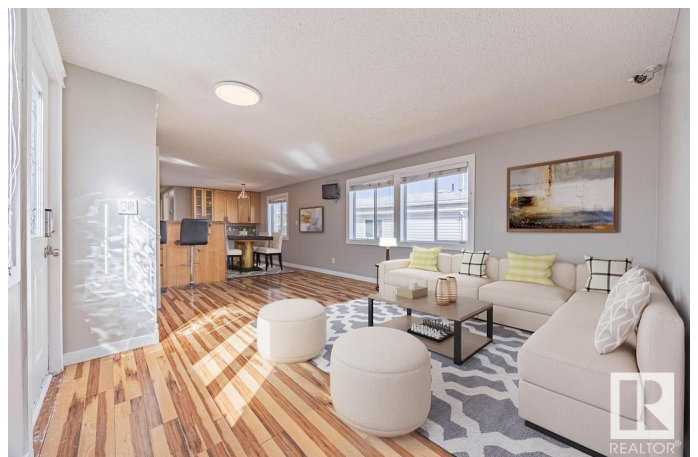
Lakeland Village, Sherwood Park, AB

Renovated, Charming Mini Home in Lakeland Village Community Beautifully updated mini home offering modern features and cozy living! Fully renovated in 2012 with stylish updates through 2022. Highlights include 3 spacious bedrooms with large closets, 2 full baths with sleek finishes, and a gourmet kitchen with stainless steel appliances and a lazy Susan. Bright, open living spaces with large windows bring in natural light. Relax on the sunny deck with a charming pergola. Dedicated laundry room with direct access to a private backyard featuring a greenhouse and storage shed. Built with solid 2x6 construction, finished with drywall, custom trim, and a durable metal roof. Every detail thoughtfully designed, with plenty of storage and extra pantry space in the kitchen. Nestled in the Lakeland Village Community, close to Emerald Hills Shopping Centre and all essential amenities.

Built in 1979

Essential Information

MLS® #	E4433011
Price	\$150,000
Bedrooms	3
Bathrooms	2.00
Full Baths	2
Square Footage	1,220



Acres	0.00
Year Built	1979
Type	Land Lease Community
Sub-Type	Detached Single Family
Style	Bungalow
Status	Active

Community Information

Address	1438 Lakeland Village
Area	Sherwood Park
Subdivision	Lakeland Village
City	Sherwood Park
County	ALBERTA
Province	AB
Postal Code	T8H 1L9

Amenities

Parking	2 Outdoor Stalls
---------	------------------

Interior

Interior Features	ensuite bathroom
Appliances	Dishwasher-Built-In, Dryer, Fan-Ceiling, Oven-Microwave, Refrigerator, Storage Shed, Stove-Electric, Washer, TV Wall Mount
Heating	Forced Air-1, Natural Gas

Exterior

Exterior	Modular
Construction	Modular
Foundation	Piling

Additional Information

Date Listed	April 26th, 2025
Days on Market	15
Zoning	Zone 25

DATA IS DEEMED RELIABLE BUT IS NOT GUARANTEED ACCURATE BY THE REALTORS® ASSOCIATION OF EDMONTON. COPYRIGHT 2025 BY THE REALTORS® ASSOCIATION OF EDMONTON. ALL RIGHTS RESERVED. Trademarks are owned or controlled by the Canadian Real Estate Association (CREA) and identify real estate professionals who are members of CREA (REALTOR®, REALTORS®) and/or the quality of services they provide (MLS®, Multiple Listing Service®)

Listing information last updated on May 11th, 2025 at 4:47pm MDT