

## \$350,000 - 57 1391 Starling Drive, Edmonton

MLS® #E4434901

### \$350,000

3 Bedroom, 2.50 Bathroom, 1,582 sqft

Condo / Townhouse on 0.00 Acres

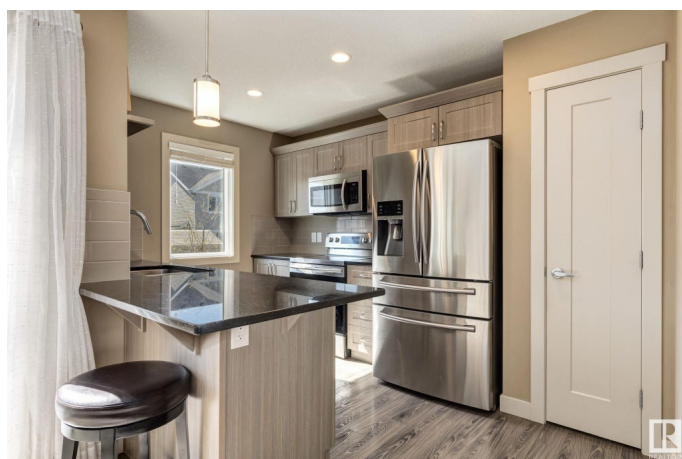
Starling, Edmonton, AB

Pride of ownership shines in this beautifully maintained townhouse featuring an open-concept main floor with durable vinyl plank flooring and plenty of natural light. The stylish kitchen is equipped with granite countertops, stainless steel appliances, and opens to spacious open concept living and dining areas, which feature a private balcony, perfect for relaxing or entertaining. Upstairs offers a full bathroom, and three spacious bedrooms, including a large primary suite complete with walk-in closet and private ensuite. The lower level offers a tandem double garage has been upgraded with drywall, taping, and paint, along with a clean, functional laundry/utility area. Access to scenic walking trails with lush ponds + quick connections to Ray Gibbon Drive and the Anthony Henday, makes commuting a breeze. Move-in ready and better than new â€” this home checks all the boxes!

Built in 2016

### Essential Information

MLS® #	E4434901
Price	\$350,000
Bedrooms	3
Bathrooms	2.50
Full Baths	2



Half Baths	1
Square Footage	1,582
Acres	0.00
Year Built	2016
Type	Condo / Townhouse
Sub-Type	Townhouse
Style	2 Storey
Status	Active

### Community Information

Address	57 1391 Starling Drive
Area	Edmonton
Subdivision	Starling
City	Edmonton
County	ALBERTA
Province	AB
Postal Code	T5S 0L3

### Amenities

Amenities	Deck, Patio
Parking Spaces	2
Parking	Double Garage Attached, Tandem

### Interior

Interior Features	ensuite bathroom
Appliances	Dishwasher-Built-In, Dryer, Garage Control, Garage Opener, Microwave Hood Fan, Refrigerator, Stove-Electric, Washer, Window Coverings
Heating	Forced Air-1, Natural Gas
Stories	3
Has Basement	Yes
Basement	None, No Basement

### Exterior

Exterior	Wood, Vinyl
Exterior Features	Golf Nearby, Landscaped, No Back Lane, No Through Road, Schools, Shopping Nearby
Roof	Asphalt Shingles
Construction	Wood, Vinyl
Foundation	Concrete Perimeter

**School Information**

Elementary	D. Tho King/Annunciation
Middle	D. Tho King/St Tho More
High	Jasper Place

**Additional Information**

Date Listed	May 7th, 2025
Days on Market	4
Zoning	Zone 59
HOA Fees	105
HOA Fees Freq.	Annually
Condo Fee	\$287

DATA IS DEEMED RELIABLE BUT IS NOT GUARANTEED ACCURATE BY THE REALTORS® ASSOCIATION OF EDMONTON. COPYRIGHT 2025 BY THE REALTORS® ASSOCIATION OF EDMONTON. ALL RIGHTS RESERVED.Trademarks are owned or controlled by the Canadian Real Estate Association (CREA) and identify real estate professionals who are members of CREA (REALTOR®, REALTORS®) and/or the quality of services they provide (MLS®, Multiple Listing Service®)

Listing information last updated on May 11th, 2025 at 4:47am MDT