

\$419,000 - 8 6214 Cartmell Court, Edmonton

MLS® #E4435078

\$419,000

3 Bedroom, 2.50 Bathroom, 1,415 sqft
Condo / Townhouse on 0.00 Acres

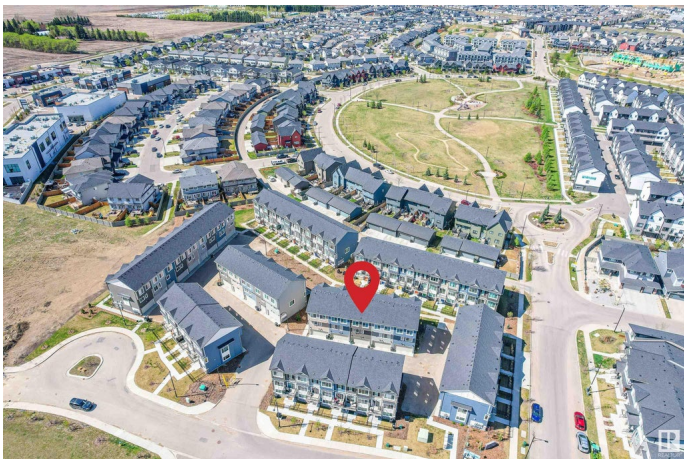
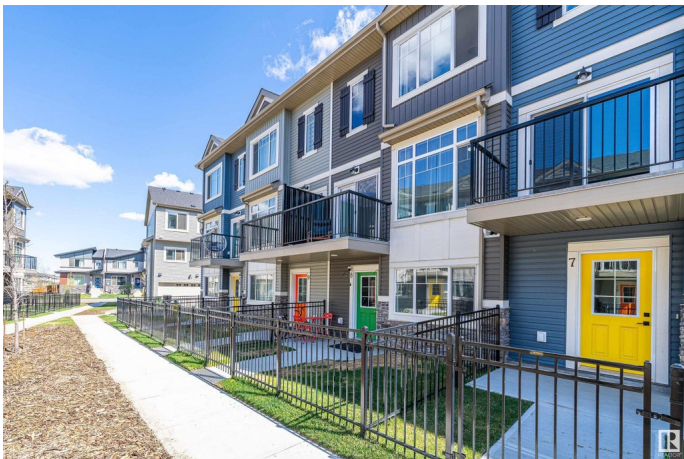
Chappelle Area, Edmonton, AB

Stunning 2023-built townhome by Landmark Homes with double attached garage, 3 spacious bedrooms + main floor den – perfect for families or professionals. Offering 1,414 sq ft of modern living, this home is steps from 2 public K-9 schools, 1 Catholic school, a future K-9 Catholic, and a high school. Walk to Heritage Shopping Centre, Shoppers, Superstore, and the upcoming Walmart! Enjoy a sleek kitchen with stainless steel appliances, 9' ceilings on the second floor, and upgraded metal stair railings. The top floor features a primary bedroom spacious enough for a California King bed and a desk side by side, two more generously sized bedrooms, and a 4-pc bath with upgraded floor tiles. Located in a family-friendly community near parks, schools, daycare, and restaurants. Don't miss out!

Built in 2023

Essential Information

MLS® #	E4435078
Price	\$419,000
Bedrooms	3
Bathrooms	2.50
Full Baths	2
Half Baths	1
Square Footage	1,415



Acres	0.00
Year Built	2023
Type	Condo / Townhouse
Sub-Type	Townhouse
Style	3 Storey
Status	Active

Community Information

Address	8 6214 Cartmell Court
Area	Edmonton
Subdivision	Chappelle Area
City	Edmonton
County	ALBERTA
Province	AB
Postal Code	T6W 3L5

Amenities

Amenities	Ceiling 9 ft., Natural Gas BBQ Hookup
Parking	Double Garage Attached

Interior

Interior Features	ensuite bathroom
Appliances	Alarm/Security System, Dishwasher-Built-In, Microwave Hood Fan, Refrigerator, Stacked Washer/Dryer, Stove-Electric, Water Softener, Window Coverings
Heating	Forced Air-1, Natural Gas
Stories	3
Has Basement	Yes
Basement	None, No Basement

Exterior

Exterior	Wood, Stone, Vinyl
Exterior Features	Airport Nearby, Fenced, Landscaped, Playground Nearby, Schools, Shopping Nearby
Roof	Asphalt Shingles
Construction	Wood, Stone, Vinyl
Foundation	Concrete Perimeter

Additional Information

Date Listed	May 8th, 2025
-------------	---------------

Days on Market	2
Zoning	Zone 55
Condo Fee	\$203

DATA IS DEEMED RELIABLE BUT IS NOT GUARANTEED ACCURATE BY THE REALTORS® ASSOCIATION OF EDMONTON. COPYRIGHT 2025 BY THE REALTORS® ASSOCIATION OF EDMONTON. ALL RIGHTS RESERVED. Trademarks are owned or controlled by the Canadian Real Estate Association (CREA) and identify real estate professionals who are members of CREA (REALTOR®, REALTORS®) and/or the quality of services they provide (MLS®, Multiple Listing Service®)

Listing information last updated on May 10th, 2025 at 7:02pm MDT