

## \$249,000 - 507 11080 Ellerslie Road, Edmonton

MLS® #E4435869

**\$249,000**

1 Bedroom, 1.00 Bathroom, 651 sqft

Condo / Townhouse on 0.00 Acres

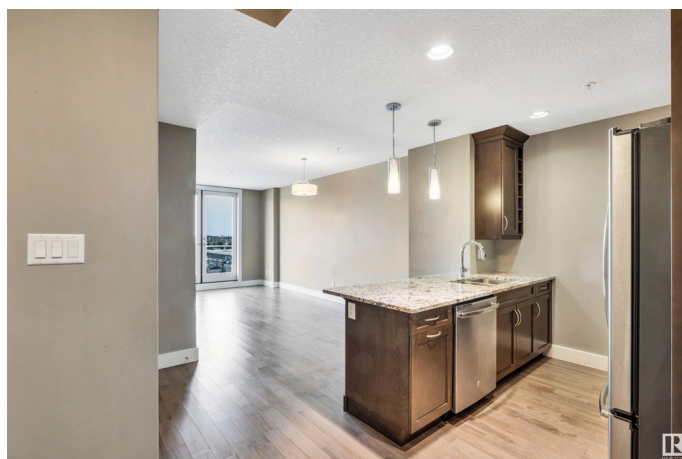
Richford, Edmonton, AB

Welcome to this stunning west-facing 1-bedroom, 1-bathroom luxury concrete condo, loaded with upgrades and move-in ready! Featuring stainless steel appliances, a mosaic tile backsplash, elegant granite countertops, engineered hardwood flooring, built-in roll-out pantry drawers, built-in cabinet garbage bin, full-height bathroom tile, wall-mounted vanity, and premium Hunter Douglas up/down and room-darkening blinds. Custom closet organizers add even more convenience. The building offers top-notch amenities, including two rooftop patios, a spacious conference room, fitness centre, lounge with billiards and social area, and a guest suite for visitors. Access to public transportation, shopping, schools, and major routes—just minutes from Anthony Henday Drive, Highway 2, and South Edmonton Common.

Built in 2014

### Essential Information

MLS® #	E4435869
Price	\$249,000
Bedrooms	1
Bathrooms	1.00
Full Baths	1
Square Footage	651



Acres	0.00
Year Built	2014
Type	Condo / Townhouse
Sub-Type	Lowrise Apartment
Style	Single Level Apartment
Status	Active

### **Community Information**

Address	507 11080 Ellerslie Road
Area	Edmonton
Subdivision	Richford
City	Edmonton
County	ALBERTA
Province	AB
Postal Code	T6W 2C2

### **Amenities**

Amenities	Ceiling 9 ft., Closet Organizers, Exercise Room, Intercom, No Animal Home, No Smoking Home, Parking-Visitor, Party Room, Recreation Room/Centre, Secured Parking, Social Rooms
Parking	Underground

### **Interior**

Appliances	Dishwasher-Built-In, Dryer, Garage Opener, Microwave Hood Fan, Refrigerator, Stove-Electric, Washer
Heating	Fan Coil, Natural Gas
# of Stories	6
Stories	1
Has Basement	Yes
Basement	None, No Basement

### **Exterior**

Exterior	Concrete, Metal, Stucco
Exterior Features	Airport Nearby, Commercial, Fenced, Golf Nearby, Landscaped, Playground Nearby, Schools
Roof	Flat
Construction	Concrete, Metal, Stucco
Foundation	Concrete Perimeter

### **Additional Information**

Date Listed	May 11th, 2025
Days on Market	55
Zoning	Zone 55
Condo Fee	\$440

DATA IS DEEMED RELIABLE BUT IS NOT GUARANTEED ACCURATE BY THE REALTORS® ASSOCIATION OF EDMONTON. COPYRIGHT 2025 BY THE REALTORS® ASSOCIATION OF EDMONTON. ALL RIGHTS RESERVED. Trademarks are owned or controlled by the Canadian Real Estate Association (CREA) and identify real estate professionals who are members of CREA (REALTOR®, REALTORS®) and/or the quality of services they provide (MLS®, Multiple Listing Service®)

Listing information last updated on July 5th, 2025 at 5:02am MDT