

# **\$115,000 - 308 10024 Jasper Avenue, Edmonton**

MLS® #E4442216

**\$115,000**

1 Bedroom, 1.00 Bathroom, 403 sqft

Condo / Townhouse on 0.00 Acres

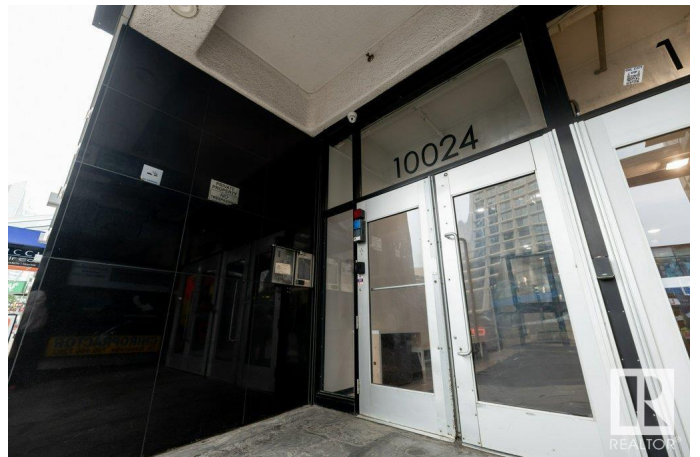
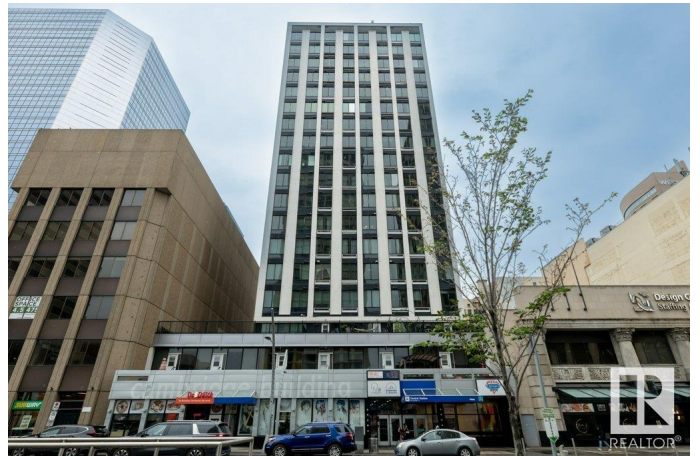
Downtown (Edmonton), Edmonton, AB

Welcome to ONE OF THE VERY FEW UNITS IN CAMBRIDGE LOFTS WITH OUTDOOR SPACE! This unit is perfect for those who are looking for a nice affordable condo for a child while they complete university, a young professional, or a savvy investor looking to cashflow with a short or long term rental. Freshly painted, and tastefully upgraded, there is nothing left to do in this unit but move in or place your rental advertisement. Upgrades include stainless steel appliances, Vinyl plank flooring, Tile flooring in the bathroom/laundry room, Trendy light fixtures, and a fully renovated bathroom. The building also has direct indoor access to L.R.T. and downtown pedway system with several shops and amenities right off the elevator in the basement. Did I mention the BEAUTIFUL PATIO WITH A PERGOLA?

Built in 1968

## **Essential Information**

MLS® #	E4442216
Price	\$115,000
Bedrooms	1
Bathrooms	1.00
Full Baths	1
Square Footage	403
Acres	0.00



Year Built	1968
Type	Condo / Townhouse
Sub-Type	Apartment High Rise
Style	Single Level Apartment
Status	Active

### Community Information

Address	308 10024 Jasper Avenue
Area	Edmonton
Subdivision	Downtown (Edmonton)
City	Edmonton
County	ALBERTA
Province	AB
Postal Code	T5R 1R9

### Amenities

Amenities	Deck, No Animal Home, No Smoking Home, Security Door, Sprinkler System-Fire, Vaulted Ceiling
Parking	No Parking

### Interior

Appliances	Dishwasher-Built-In, Dryer, Hood Fan, Refrigerator, Stove-Electric, Washer, See Remarks
Heating	Baseboard, Electric
# of Stories	18
Stories	1
Has Basement	Yes
Basement	None, No Basement

### Exterior

Exterior	Concrete, Metal
Exterior Features	Public Transportation, Shopping Nearby
Roof	Tar & Gravel
Construction	Concrete, Metal
Foundation	Concrete Perimeter

### Additional Information

Date Listed	June 12th, 2025
Days on Market	22

Zoning	Zone 12
Condo Fee	\$389

DATA IS DEEMED RELIABLE BUT IS NOT GUARANTEED ACCURATE BY THE REALTORS® ASSOCIATION OF EDMONTON. COPYRIGHT 2025 BY THE REALTORS® ASSOCIATION OF EDMONTON. ALL RIGHTS RESERVED. Trademarks are owned or controlled by the Canadian Real Estate Association (CREA) and identify real estate professionals who are members of CREA (REALTOR®, REALTORS®) and/or the quality of services they provide (MLS®, Multiple Listing Service®)

Listing information last updated on July 4th, 2025 at 7:02pm MDT