

\$600,000 - 3095 Carpenter Landing, Edmonton

MLS® #E4444417

\$600,000

6 Bedroom, 3.50 Bathroom, 2,330 sqft

Single Family on 0.00 Acres

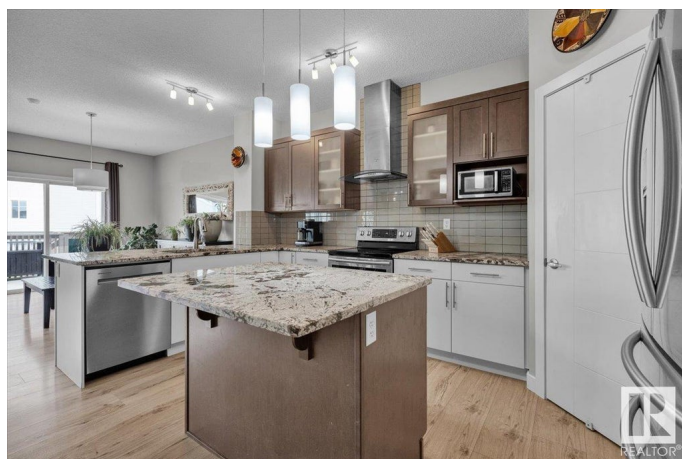
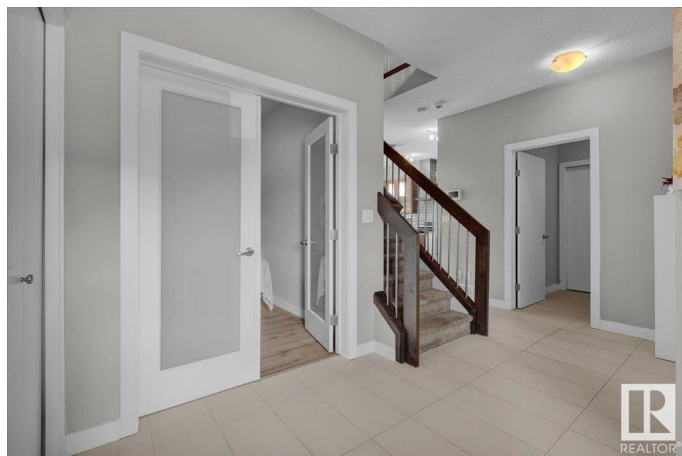
Chappelle Area, Edmonton, AB

Located on a quiet street is this FULLY FINISHED & UPGRADED HOME IN CHAPPELLE â€“ BACKING A WALKING PATH! Built by Look Master Builder, this 6-bed, 3.5-bath home is sure to impress you. The main floor features a den/bedroom, 2pc bath, & main floor laundry. The kitchen has a large corner pantry, upgraded appliances, granite countertops, & loads of cabinetry. The open living/dining area has a gas fireplace & loads of natural light. Step outside to a 2-tier deck w/ a hot tub! Upstairs includes a large bonus room, 4 bedrooms including a primary room w/ a walk-in closet & 5pc spa-like ensuite (w/ a soaker tub). The fully finished basement offers a rec room, 6th bedroom, full bath, & a rough-in for a second kitchen. Upgrades: Solar panels (which reduce utility costs), A/C (2022), water softener & more! You also have access to Chappelle Social House w/ a skating rink, basketball/ pickleball courts & MORE!

Built in 2015

Essential Information

MLS® #	E4444417
Price	\$600,000
Bedrooms	6
Bathrooms	3.50
Full Baths	3



Half Baths	1
Square Footage	2,330
Acres	0.00
Year Built	2015
Type	Single Family
Sub-Type	Detached Single Family
Style	2 Storey
Status	Active

Community Information

Address	3095 Carpenter Landing
Area	Edmonton
Subdivision	Chappelle Area
City	Edmonton
County	ALBERTA
Province	AB
Postal Code	T6W 2Y9

Amenities

Amenities	Air Conditioner, Deck, Hot Tub, Solar Equipment
Parking Spaces	4
Parking	Double Garage Attached

Interior

Interior Features	ensuite bathroom
Appliances	Alarm/Security System, Dishwasher-Built-In, Dryer, Hood Fan, Microwave Hood Fan, Refrigerator, Stove-Electric, Washer, Water Softener, TV Wall Mount
Heating	Forced Air-1, Natural Gas
Fireplace	Yes
Fireplaces	Tile Surround
Stories	3
Has Basement	Yes
Basement	Full, Finished

Exterior

Exterior	Wood, Stone, Vinyl
Exterior Features	Public Transportation, Schools, Shopping Nearby, See Remarks
Roof	Asphalt Shingles

Construction	Wood, Stone, Vinyl
Foundation	Concrete Perimeter

School Information

Elementary	Garth Worth./St. Thomas A.
Middle	Garth Worth./St. Thomas A.
High	Dr. Anne A./Father Michael

Additional Information

Date Listed	June 26th, 2025
Days on Market	21
Zoning	Zone 55
HOA Fees	426
HOA Fees Freq.	Annually

DATA IS DEEMED RELIABLE BUT IS NOT GUARANTEED ACCURATE BY THE REALTORS® ASSOCIATION OF EDMONTON. COPYRIGHT 2025 BY THE REALTORS® ASSOCIATION OF EDMONTON. ALL RIGHTS RESERVED.Trademarks are owned or controlled by the Canadian Real Estate Association (CREA) and identify real estate professionals who are members of CREA (REALTOR®, REALTORS®) and/or the quality of services they provide (MLS®, Multiple Listing Service®)

Listing information last updated on July 17th, 2025 at 6:32am MDT